

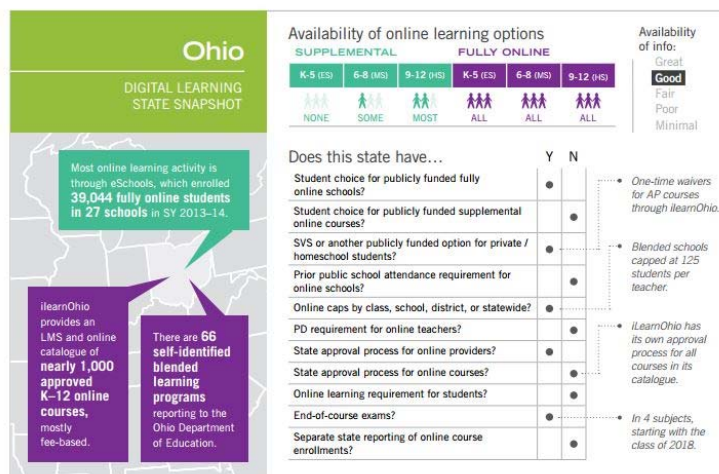


Creating a School within a School

Districts can create a school within a school using online options. This model serves students in non-traditional capacity, offers differentiated instruction opportunities, blended learning component, fits needs of the families, and reengages students leaving the district by providing online options, in order to stay enrolled in the district. Creating a non-traditional environment utilizing online courses will help reach students who might be disengaged with the brick and mortar setting. Learn how to provide your districts with online courses, or create an online program of your own.

Learn more about:

- District Challenges
- Successful Models
- Identifying Students
- Creating the School
- Finding the right Curriculum



Keeping Pace with K-12 Online Learning 2014, Evergreen Education Group, 2014.

This would be a great introduction to supplementing traditional programs, and alternative school options with online course offerings, creating or expanding an online program, or serving as the online component of a blended learning model. Examples of how other districts and schools have successfully used online curriculum will be shared.