



---

---

---

---

---

---

---



---

---

---

---

---

---

---



---

---

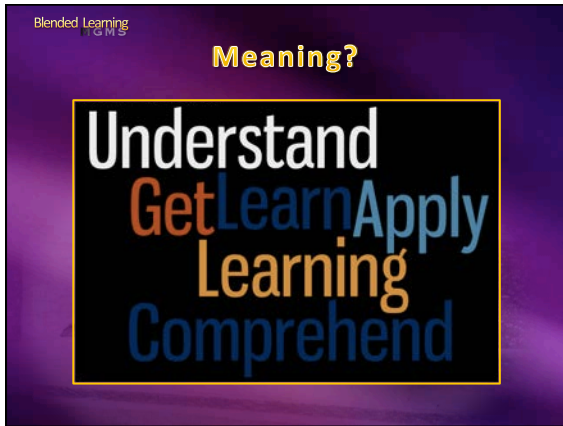
---

---

---

---

---




---

---

---

---

---

---

---




---

---

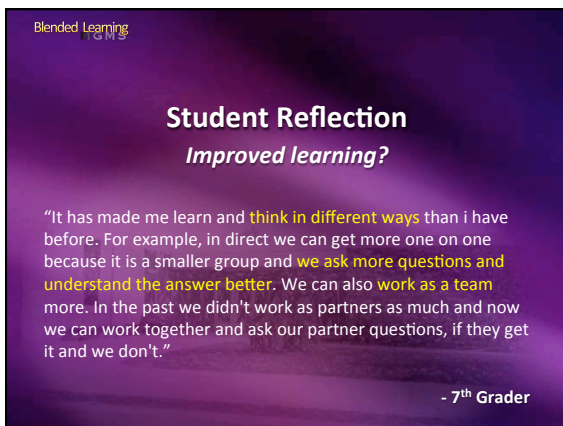
---

---

---

---

---




---

---

---

---

---

---

---

Blended Learning  
TOMS

## Student Reflection

### Improved learning?

"I **know more** than I did last year."

- 8<sup>th</sup> Grader

"It is a lot better than last year. You **have to depend on yourself and others** in the class."

- 7<sup>th</sup> Grader

---

---

---

---

---

---

---

---

Blended Learning  
TOMS

## Improved learning?

"It has helped me **stay awake** during class because all classes in one day can be very stressfull!"

- 7<sup>th</sup> Grader

"In collaborative there is a lot **more hands on activities**, which I like because I can remember a lot more things that way."

- 7<sup>th</sup> Grader

---

---

---

---

---

---

---

---

Blended Learning  
TOMS

## Improved learning?

"It has given me a chance to take **more time to learn and understand better** of what the teacher is teaching."

- 8<sup>th</sup> Grader

"It has helped me **understand** things better."

- 8<sup>th</sup> Grader

---

---

---

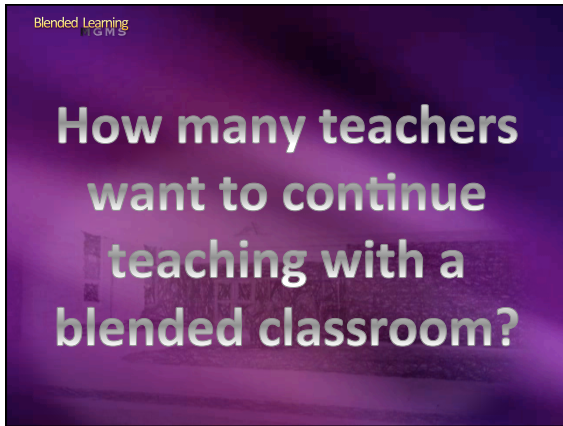
---

---

---

---

---



---

---

---

---

---

---

---



---

---

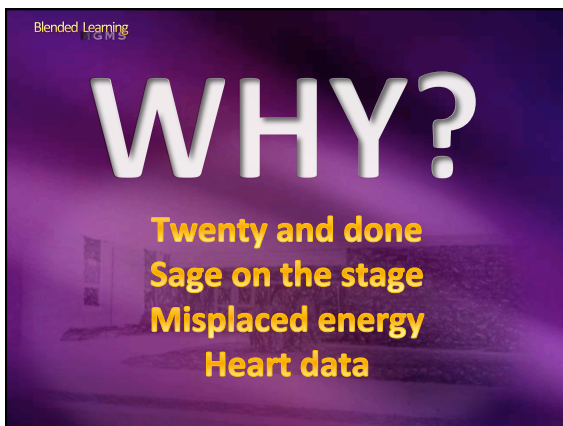
---

---

---

---

---



---

---

---

---

---

---

---



---

---

---

---

---

---

---



---

---

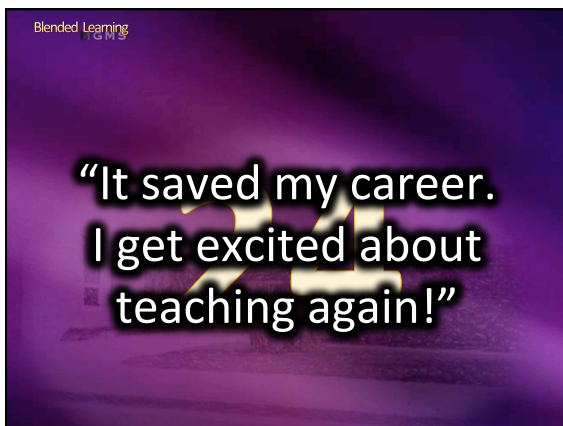
---

---

---

---

---



---

---

---

---

---

---

---

Blended Learning  
GMS

**Overall Observations**

Higher Student Engagement and Independence  
Improved Classroom Management  
Implemented REAL Differentiation  
Greater understanding of content.  
Development of 21<sup>st</sup> Century Skills

↓

**LEARNING**

---

---

---

---

---

---

---

Blended Learning  
GMS

**What is it?**

---

---

---

---

---

---

---

Blended Learning  
GMS

**COLLABORATIVE  
DIRECT  
INDEPENDENT STATION**

---

---

---

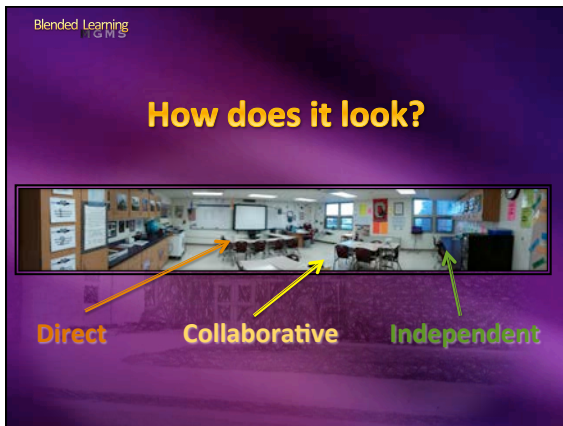
---

---

---

---






---

---

---

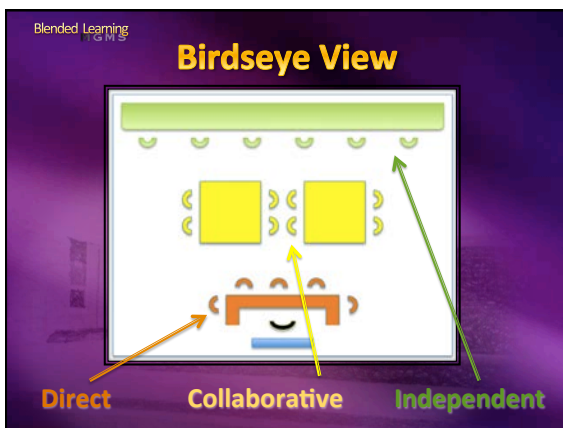
---

---

---

---

---




---

---

---

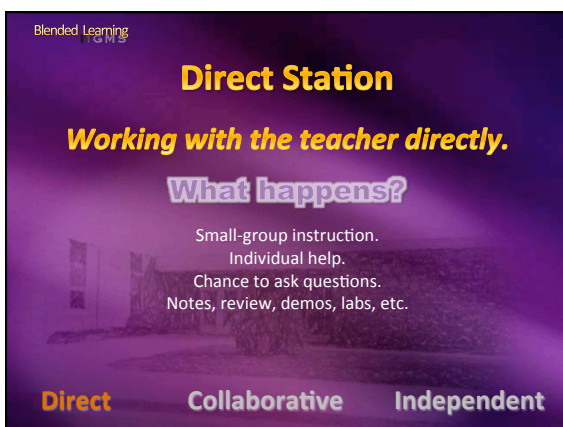
---

---

---

---

---




---

---

---

---

---

---

---

---

Blended Learning  
GMS

## Collaborative Station

*Working with other students.*

### What happens?

- Self-motivated participation by all.
- Completion of questions, worksheets, labs, etc.
- Assigning of roles by group members.
- Reliance on each other.

Direct      **Collaborative**      Independent

---

---

---

---

---

---

---

---

Blended Learning  
GMS

## Independent Station

*Working by yourself.*

### What happens?

- Often work on the laptops.
- Completion of labs, projects, worksheets, reviews, online games, watch videos, etc.
- Use headphones.
- Organized work relying on yourself.

Direct      Collaborative      **Independent**

---

---

---

---

---

---

---

---

Blended Learning  
GMS

## Where do you go?



Direct      Collaborative      **Independent**

---

---

---

---

---

---

---

---



Blended Learning  
GMS

## Where do you go?



**Direct**      **Collaborative**      **Independent**

---

---

---

---

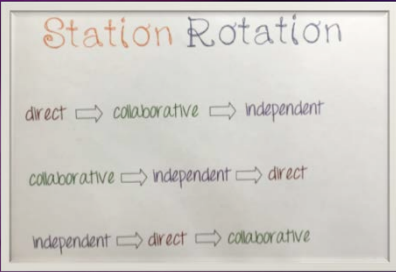
---

---

---

Blended Learning  
GMS

## How do you rotate?



**Direct**      **Collaborative**      **Independent**

---

---

---

---

---

---

---

Blended Learning  
GMS

# Computer Tools, Usernames, and Passwords

---

---

---

---

---

---

---



---

---

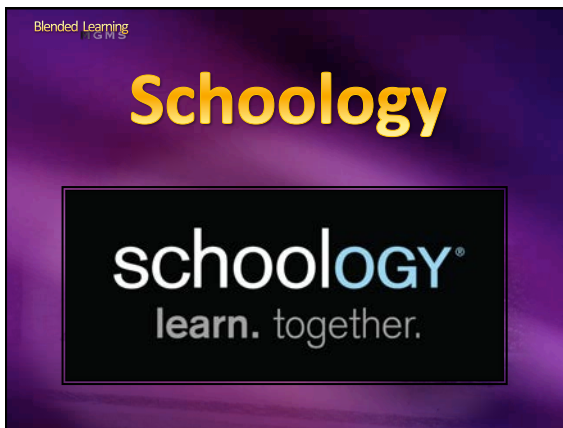
---

---

---

---

---



---

---

---

---

---

---

---



---

---

---

---

---

---

---



---

---

---

---

---

---

---